



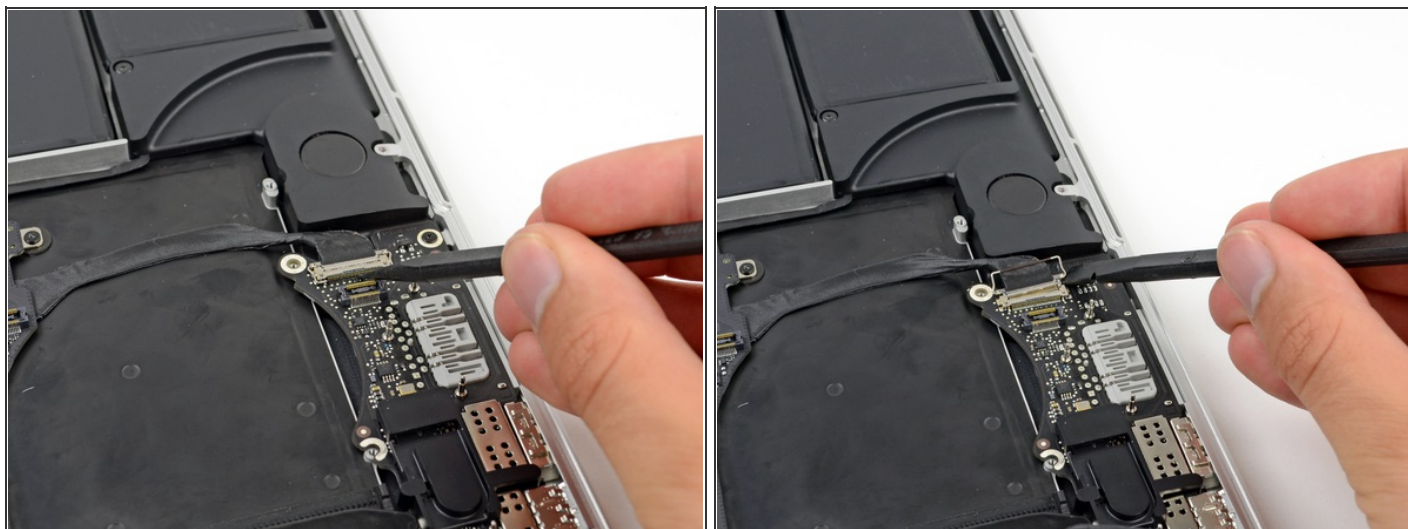
Installing MacBook Pro 15" Retina Display Mid 2012 I/O Board

Written By: Brett Hartt

SUMMARY

Pre-req only

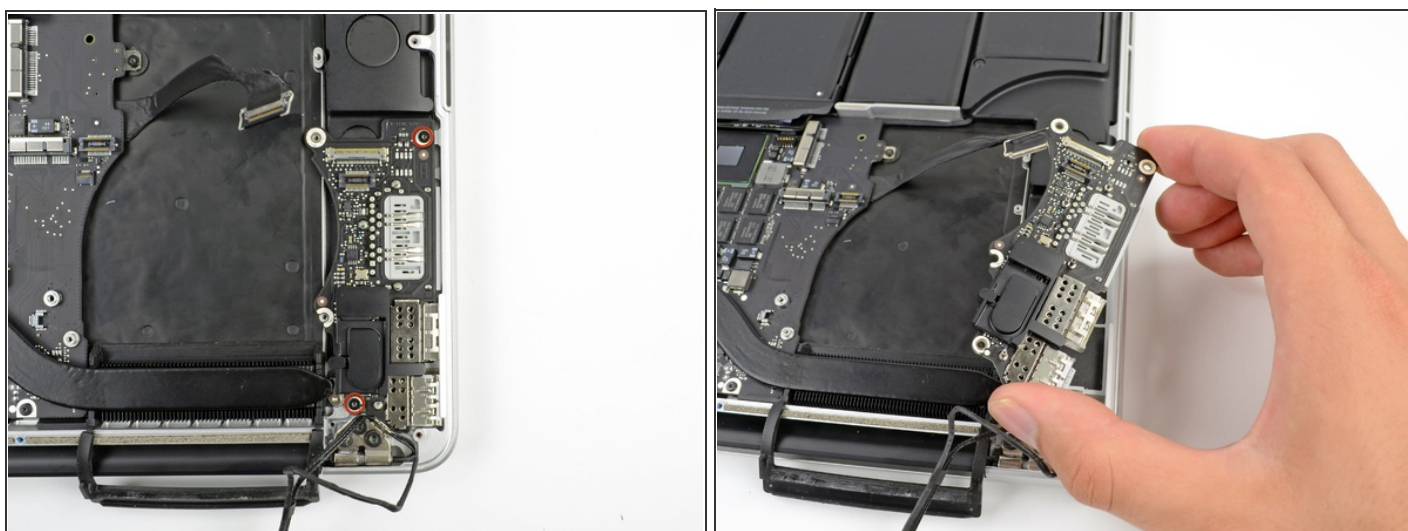
Step 1 — I/O Board



- Use the tip of a spudger to flip up the I/O board data cable lock and rotate it toward the battery side of the computer.
- Use the flat end of a spudger to slide the I/O board data cable straight out of its socket on the logic board.
- Do not lift up on the I/O board data cable, as its socket is very fragile. Pull the cable perpendicular to the face of the logic board.



Step 2



- Remove the two 3.1 mm T5 Torx screws securing the I/O board to the logic board.
- Carefully lift the I/O board and remove it from the lower case.

To reassemble your device, follow these instructions in reverse order.

This document was last generated on 2012-11-27 05:37:11 PM.